

About Clelian Heights School For Exceptional Children

Clelian Heights was founded in 1961 as a private, non-profit residential and day school for mentally retarded children. It is owned and operated by the Apostles of the Sacred Heart of Jesus, is licensed by the Pennsylvania Department of Welfare and meets all school laws and regulations issued by the State Department of Education. Its services are offered without discrimination on the basis of race, color, religious creed, sex or nationality. It is located north of Greensburg, Pennsylvania on Route 66.

Through the kindness of donors, the school has grown from the original farmhouse, to a modern building with classrooms, dormitories, a dining room, chapel, workshops, and special facilities for therapy and recreation.

The Clelian Heights staff of religious and lay professionals includes a director, a principal, a school psychologist, a speech clinician, certified teachers, group parents, a resident chaplain, a dietitian, and a school nurse.

Donations and tuition based on ability to pay, are the school's only sources of support.

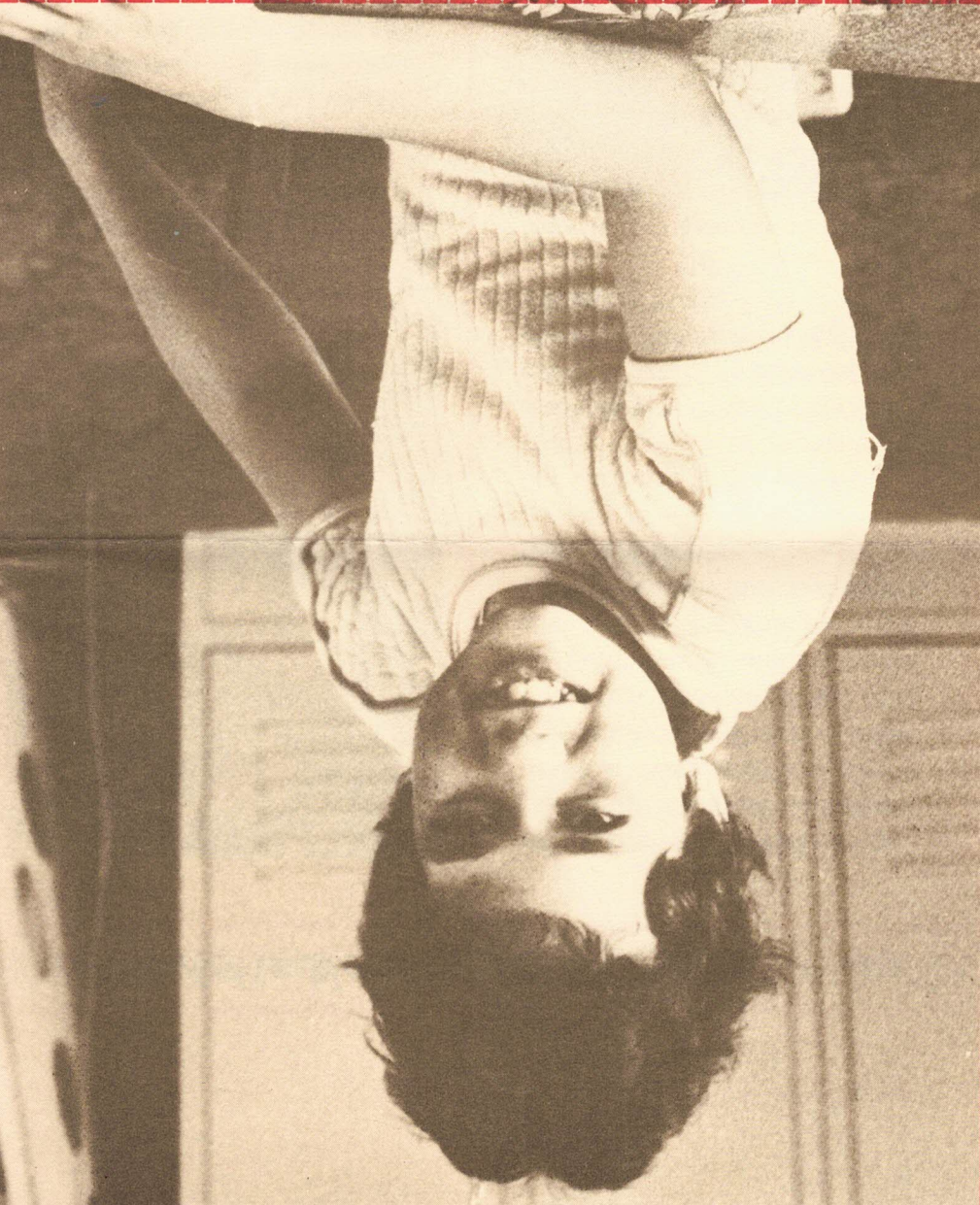
Become a Friend of Clelian Heights

You can share in the satisfaction of helping through a donation to Clelian Heights School. Your tax deductible gift may be in the form of:

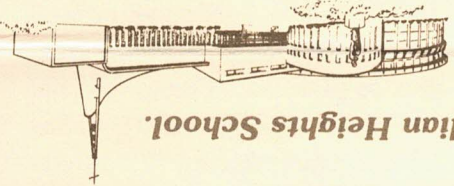
- A cash contribution
- Real estate
- Appreciated securities
- A living trust or annuity
- Life insurance
- A bequest in your will

You may designate your contribution as a Living Memorial to your loved ones, living or deceased. A large memorial plaque will be erected in a prominent place in Chip's House. It will bear the names of those who have contributed \$500 or more and the names of the loved ones they wish to honor.

All of our benefactors are remembered daily in the prayers of the Sisters and children at Clelian Heights. To discuss your gift, please call the Director at (412) 837-8120 or write and we will call you.



I wish to become a Friend of Clelian Heights School.



Name _____ Telephone Number _____

Street Address _____

City, State, _____ Zip Code _____

Here is my gift of \$ _____ . Here is my pledge of \$ _____

Please contact me regarding payment plan.

Please accept my gift of \$ _____ as a lasting tribute to _____

_____ (Living Memorial)

Please contact me regarding immediate and deferred giving plans.

I am employed by this matching gift company _____

Your contribution is tax deductible. Please make check payable to:

CLELIAN HEIGHTS SCHOOL

R. D. 9, Box 607

Greensburg, Pa. 15601-9232

THANK YOU

Your Help is Needed for "Chip's House"



Charles H. "Chip" Decker, Jr. was a young man led by his heart and captured by a dream.

Chip came to Clelian Heights thirteen years ago. Only five years old, his broad smile and sparkling eyes already knew how to speak love and warmth to those who met him. Chip knew the real worth and purpose of living—he treasured life, love and friendship.

Clelian Heights watched Chip grow... a Boy Scout senior patrol leader, an altar boy, a Special Olympic competitor, a part-time worker at a local newspaper. Chip met each new challenge head on—with enthusiasm and a deepening sense of responsibility.

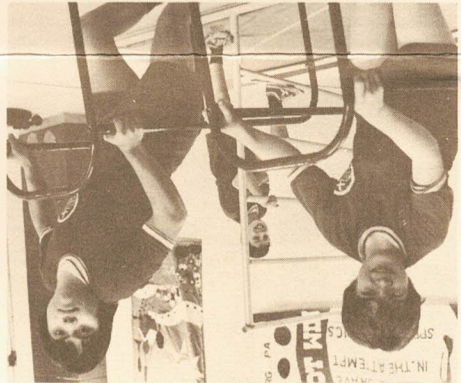
And he had a dream. Chip longed for the day when, as a contributing member of the community, he could show his thanks for the love and care Clelian Heights had given him. He wanted to help others as he had been helped.

Clelian Heights shared Chip's dream—but only three days after plans for its new expansion were finalized, Chip quietly slipped from this world to the home of his heavenly Father. Chip left us the challenge of his dream—to build for his friends. Won't you help us?

Residents of Chip's House will plan, prepare and serve their own meals. It will provide a degree of independence and responsibility beyond that possible in the existing dormitory. A similar program already exists for young women who have taken over the original renovated farmhouse.

On the ground floor of Chip's House there will be rooms for small parts assembly, a commercial size laundry, a photographic darkroom, and other vocational services.

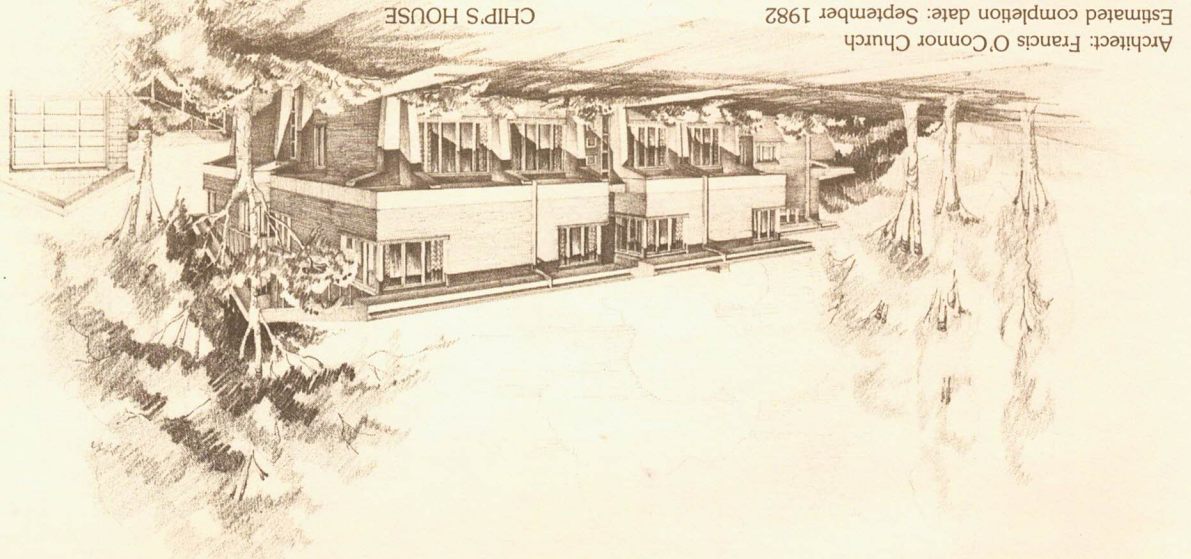
Your help is essential to make Chip's House a reality. Please share your love through a gift of cash, real estate, appreciated securities, a trust or annuity, life insurance, or a bequest in your will.



Clelian Heights needs to expand its residential facilities for young men and develop new capabilities in vocational assessment and work adjustment training.

To do this, plans have been developed for a new building that will serve both as a residence and an educational facility.

To be known as "Chip's House," the new building will house students and will have two small apartments for residential supervisors. There will be a large kitchen, dining room and several small lounges for recreation and group meetings.

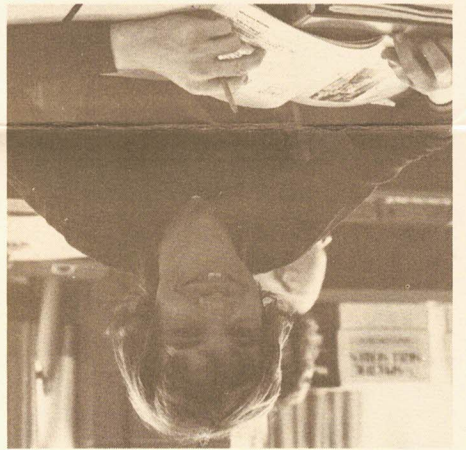


Architect: Francis O'Connor Church
Estimated completion date: September 1982

An Environment that Fosters Growth, and Builds on Potential

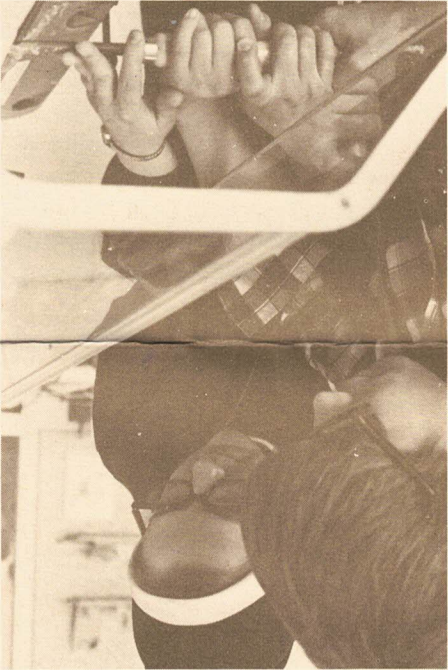
Students learn to care for themselves and relate to others through a full program of personal skills training, socialization, and recreation. They learn to cook, sew, and take care of their own living quarters. They take part in community activities through field and shopping trips, Girl and Boy Scouts, weekly dances, and the Special Olympics.

Older students, aiming at a transition from school to a work environment, are given opportunities to develop skills needed to succeed on a job.



It's the goal of Clelian Heights School to help mentally retarded children from ages 5 to 21 meet their individual and unique needs. Each student takes part in a non-graded school program that places strong emphasis on skills that will help them maximize their potential to lead normal, productive lives.

Clelian Heights provides these students with exposure to vocational tasks to help them assess their individual potential and interests. Special programs help them learn to work under supervision, develop positive work habits and attitudes, and maintain job performance over an extended period of time. Vocational evaluation using a variety of work activities is scheduled to assess physical and mental capabilities and interests.





Share Some Love

The human person is called to a destiny which transcends this age. In light of that destiny the individual must have the freedom to know and respond to his own call. For this the person with special needs must have the opportunity of a special program. That's what Clellian Heights School is about.

**Clellian Heights
School for
Exceptional
Children**
Greensburg, PA