

# CLELIAN HEIGHTS: Advancing

## The Quality of Life

### Phase I

HOW? By initiating a building program in 1992 for two 10-unit efficiency apartment buildings for young adults with developmental disabilities. These two buildings, each approximately 7,000 square feet in size, will provide living accommodations for 20 young adults at a cost of \$500,000.00 per building. Each apartment will have a sitting area/bedroom, kitchen and bath area. In addition to the apartments, a laundry, common kitchen, large lounge, and game room will also be included in each building.

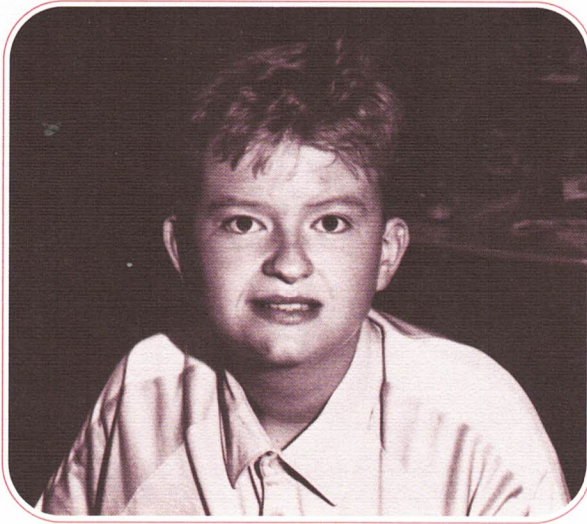


## CLELIAN HEIGHTS: Enhancing

### Recreation and Therapeutic Opportunities

#### Phase II

HOW? By planning to build *in the future* a 14,000 square foot complex which would include an indoor pool, gymnasium and whirlpool. Such a complex would enhance the therapeutic and recreational facilities to provide exercise and diverse recreation for individuals with physical and developmental disabilities. This building would have direct access to the main building and be completely handicapped accessible.



## CLELIAN HEIGHTS: Financing

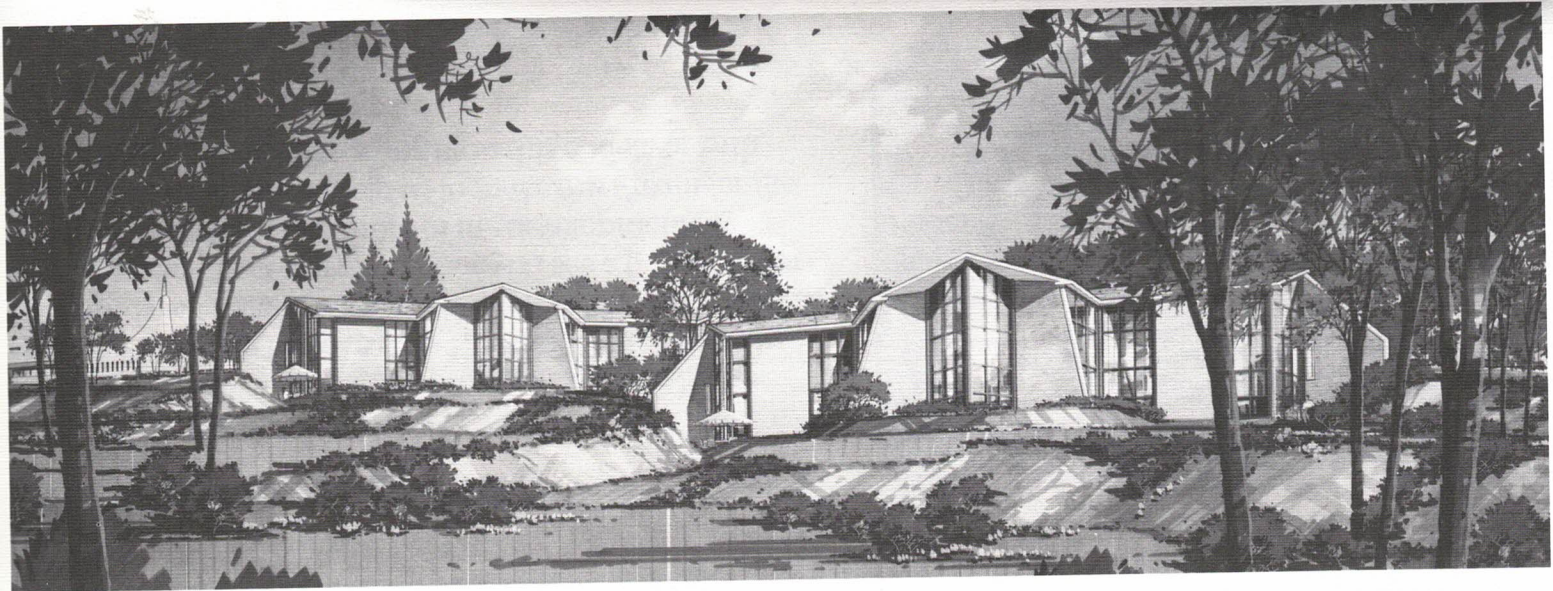
### Excellence In Programing

#### NOW and in the FUTURE

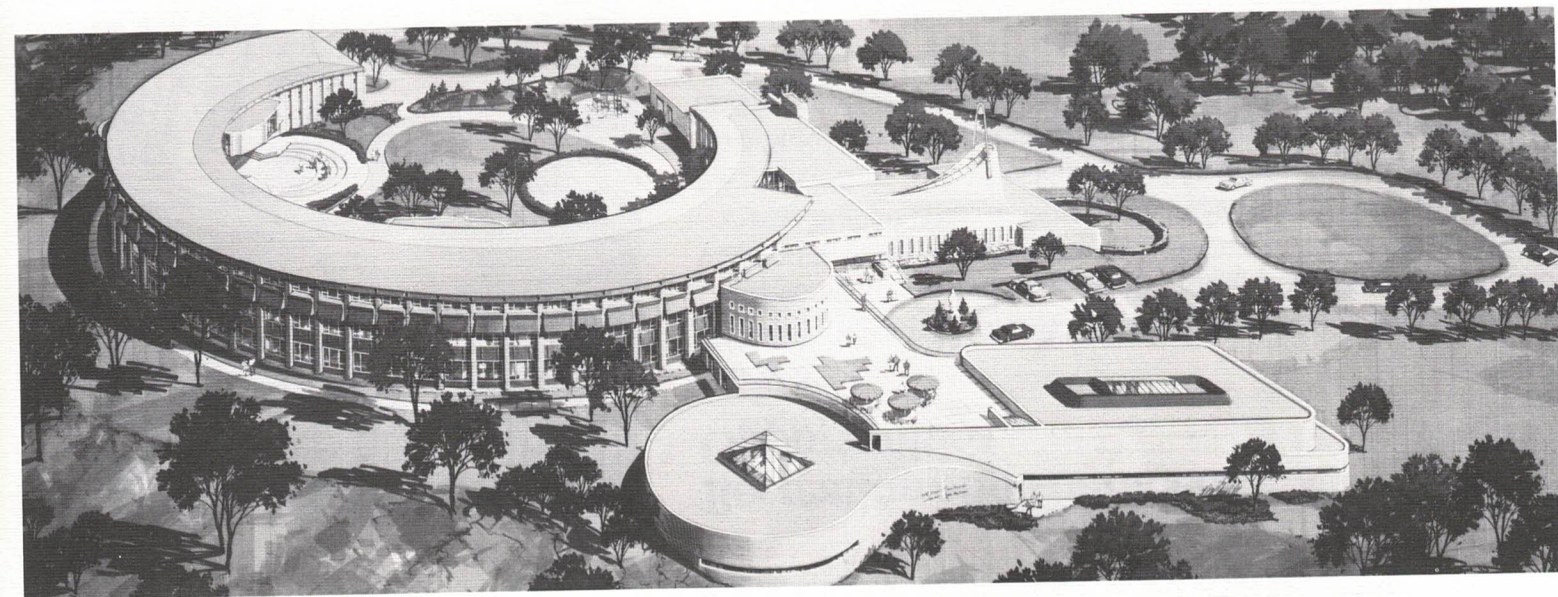
The first phase of our building project is to begin in the spring of 1992. We hope to raise \$2.5 million dollars from the friends of Clelian Heights. We know you see this work as important and necessary and hope you see a pledge or gift as an investment in the future of the developmentally disabled. We ask you to help us to *make this dream for the future come true* by supporting us in this endeavor with your pledge or gift.







Phase I



Phase II

At **CLELIAN HEIGHTS** there is a **PLAN**  
for the **FUTURE...**



a **GOAL** set for our **DREAMS**

