

THE CHAPEL

Christian ideals, fostered by the teaching of Christian doctrine, form the basis of life at Clelian Heights. In the school's "heart" - the Chapel - students of all religions gather together with staff to worship and find fulfillment of their common and personal spiritual needs.

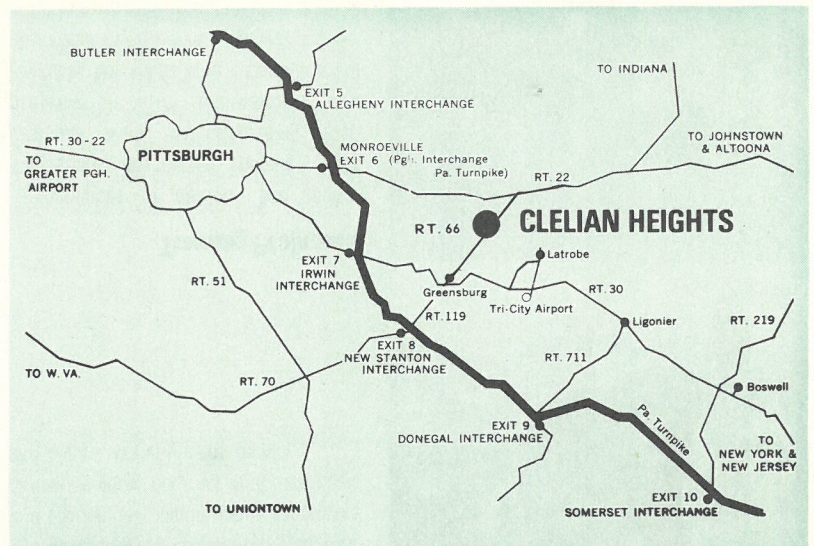
Clelian Heights School

We invite both individuals and groups to visit Clelian Heights School. Convenient to Pittsburgh, the school is located off Route 66, North of Greensburg.

FOR FURTHER INFORMATION OR AN APPOINTMENT CONTACT:

THE DIRECTOR

Clelian Heights School for Exceptional Children
R.D. 9 Box 607
Greensburg, Pennsylvania 15601
Telephone 412-837-8120

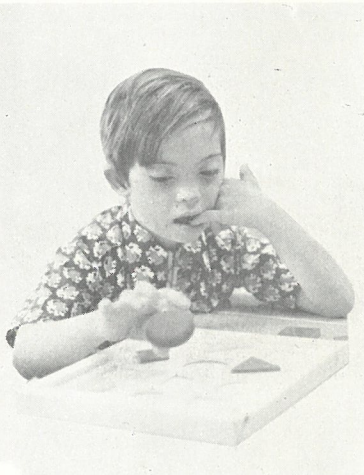


Clelian Heights School FOR EXCEPTIONAL CHILDREN

R.D. 9 BOX 607 • GREENSBURG, PENNSYLVANIA 15601 • PHONE 412-837-8120

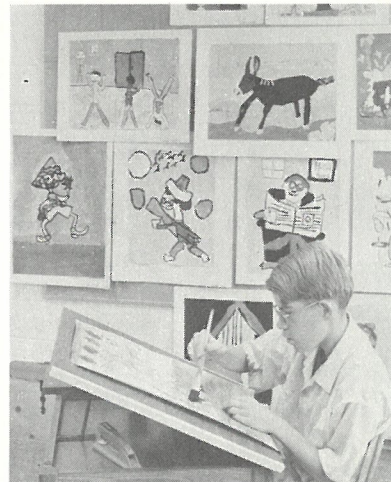
Individualized Program

Both resident and day students, who range in age from 6 to 21, participate in an individualized school program. In an attempt to meet varied educational needs, each child's daily schedule is so arranged that he attends classes with children who are at the same academic and social level in each specific area.



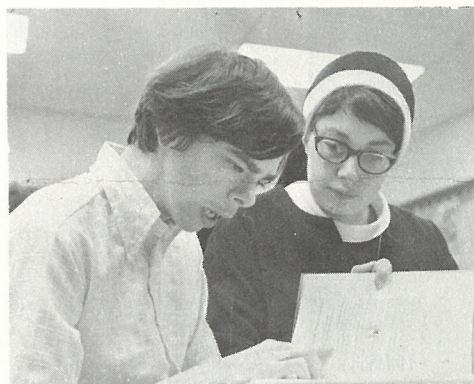
Art Classes

Respect for and expression of each child's uniqueness is highly valued. Creative exploration of art media provides opportunities for personal creativity.



Self-Help Skills

The development of essential self-help skills is an integral part of each child's growth and an aid in attaining maximum independence. The formation of good work habits, such as cooperating with others, learning responsibility, and persevering at assigned tasks is fostered throughout the child's development.

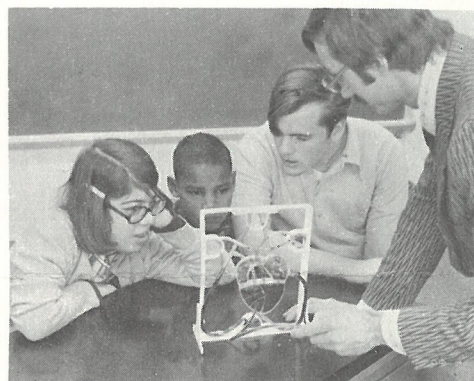


Academic Subjects

Strong emphasis is placed on gaining competency in basic academic subjects. Language arts and math skills are stressed in the context of their practical application to real life situations.

Speech Therapy

Speech and language therapy, administered by a certified speech clinician, is enhanced by intensive concentration on language development within the classroom setting. Visual and auditory perceptual training programs increase readiness for acquisition of academic skills.



The Sciences

Classes in natural and social sciences expand the children's awareness of their physical and cultural environment.

Music Activities

Musical and rhythmical activities are additional outlets for self-expression. Participation in school productions offers each child the occasion to see the contribution of his talents as noteworthy.



Physical Education

Daily physical education classes stimulate both physical and emotional well being and cooperative team spirit through a varied program of gymnastics, calisthenics, swimming, perceptual motor training and team sports.



Objective

Clelian He attempts to help students attain their objectives, realizing the child's capacity.

Religious instruction promotes spiritual and moral growth. Maximum emphasis is placed on essential academic subjects.

Development of personal and interpersonal skills promotes acceptance of relationships.

Development of practical skills, including pre-vocational experiences, maximum efficiency and proficiency.

Physical education is designed to develop not only physical strength but also to develop perceptual motor agility and dexterity.

Training in independence.

S:

ights School
lp its studen-
following ob-
ive to each
y:

training to
ritual and

adequacy in
ademic sub-

t of social
l skills to
table human

t of practical
ng manual,
and work
to attain
onomic self-
entials.

education
promote not
fitness, but
top visual-
otor skills,
terity.
civic respon-



Workshops

There are workshops for woodworking, grooming arts, needlecraft, ceramics and all phases of domestic arts, including cooking, sewing, ironing, laundering, and maintaining a model apartment. Basic photographic techniques are taught in the school's fully equipped darkroom.

Individual Skills

While continuing their courses of study, the older students, aiming at achieving the transition from a school to work environment, are given the opportunity to develop skills directly related to every day living and job performance.



Learning Trips

Frequent field and shopping trips provide opportunities for learning the basic principles of money management and budgeting. Participation in area civic and recreational events gives experience in making social contract with individuals and groups within the community.



Work-Training

Exposure to these various simulated work-training situations permits assessment of students' specific potentials and interests, ability to follow directions, reaction to supervision, and work attitudes and tolerance.

Training Programs

Experiences in outdoor and indoor maintenance are offered. Training in light custodial work, groundskeeping, food preparation and dishwashing are available. For those who require a more structured work setting, training is given in performing simplified routine tasks.



Recreational Activities

School sponsored recreational activities also include a Girl Scout and Boy Scout troop. Weekly teen dances are organized by volunteer groups from nearby colleges. Students also take part in the Special Olympics.

Complete Staff

The Clelian Heights staff consists of a Director, school psychologist, speech clinician, certified religious and lay teachers, groupmothers, a resident Chaplain, dietician and school nurse. The services of a pediatrician and a consultant psychologist are also available.



The Child

Children who demonstrate intellectual functioning within the educable or trainable mentally retarded range are accepted for an evaluation period to determine if the program is suited to their needs. Applicants must be ambulatory and trained to adequate personal care habits. Once accepted, a child may remain as long as he continues to benefit from the program.

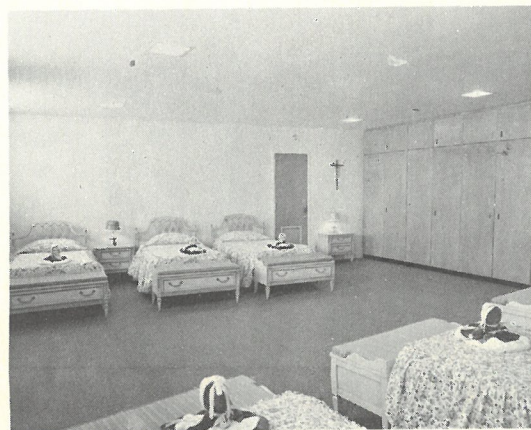
THE LIBRARY

The attractive library is on the mezzanine level above the administrative offices. It presently contains more than 1200 volumes suited to the interests and needs of the students.



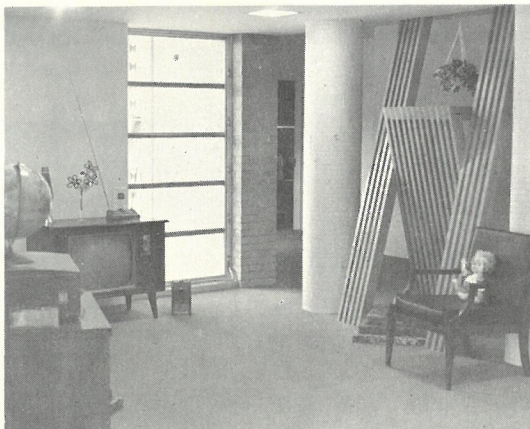
DINING ROOM

A circular children's dining room with royal blue carpeting looks out into the interior court. Family style meals are served from a modern, well-equipped, adjoining food preparation facility.



THE DORMITORIES

The top floor of the structure contains the children's dormitories. These spacious rooms are furnished in French provincial for the girls and in masculine-type contemporary for the boys.



THE LOUNGES

Adjacent to the dormitories are four lounges which project into the interior court and which provide comfortable areas for indoor recreation. Television, reading and play materials are available.

Clelian Heights School

Founded in 1961, Clelian Heights is a private, non-profit, residential and day school for mentally retarded children, owned and operated by the Apostles of the Sacred Heart of Jesus, Inc. It is licensed as a residential mental retardation facility by the Department of Welfare of the Commonwealth of Pennsylvania. As a member of the Greensburg Diocesan School System, it has been established in accordance with the school laws of the Commonwealth of Pennsylvania and the regulations and recommendations issued by the Department of Education. Its services are offered without discrimination on the basis of race, color, religious creed, sex, or national origin. Tuition and private donations are the only sources of the school's income. Classes are ungraded and individualized to provide a balanced program of spiritual, academic, social, and personal experiences which seem best suited to bring these children to maximum self realization.